

Issue: 1
Issue Date: 070313

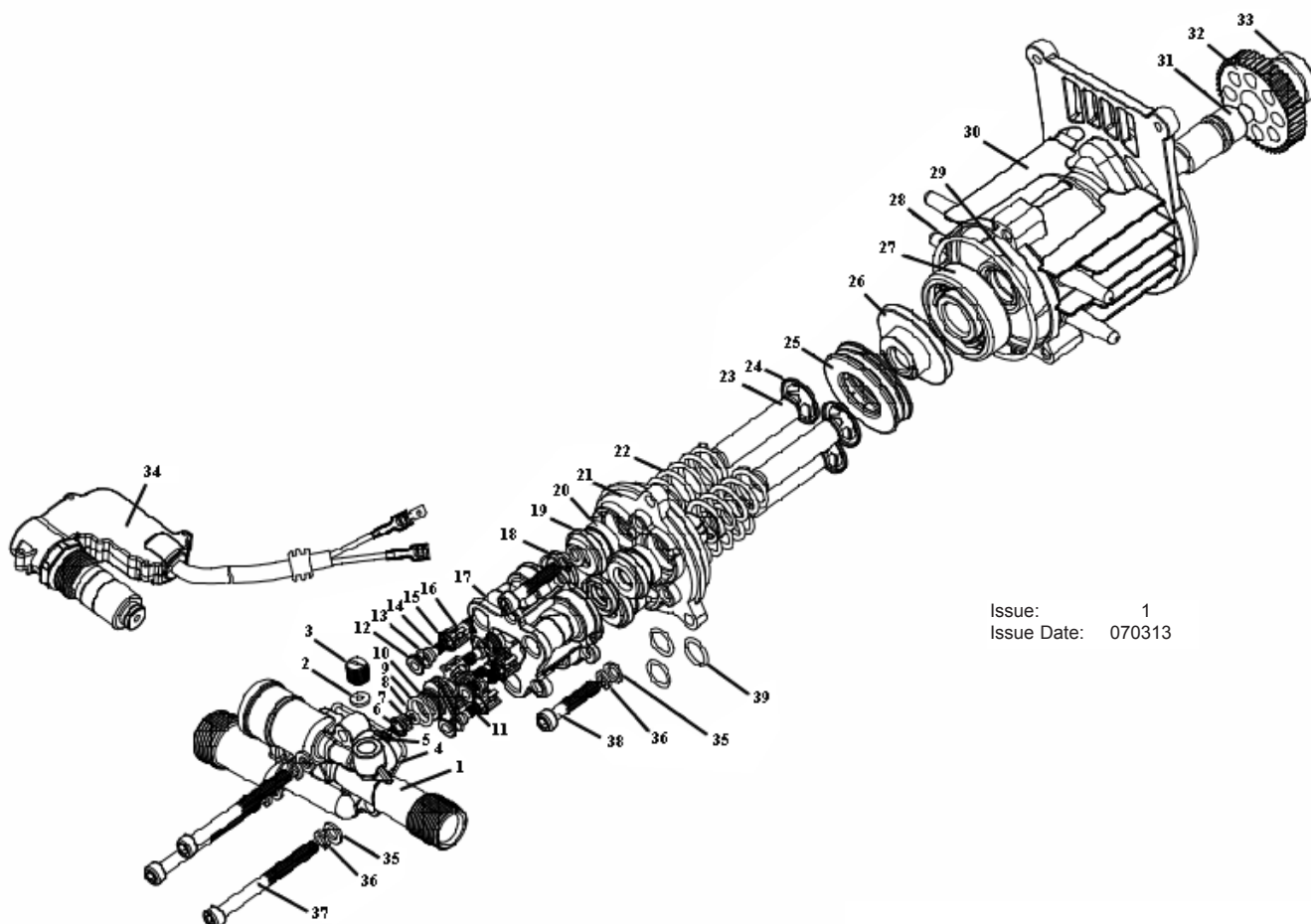
ITEM	PART NO	DESCRIPTION	ITEM	PART NO	DESCRIPTION	ITEM	PART NO	DESCRIPTION
1	PW1600.01	LANCE FOR GUN	20	PW1600.20	POWER CORD COVER	38	PW1600.38	MOTOR SUPPORT RING
2	PW1600.02	PRESSURE GUN	21	PW1600.21	CUSHION	39	PW1600.39	WATER INLET
3	PW1600.03	HIGH PRESSURE HOSE	22	PW1600.22	MOTOR COVER			FILTER (SMALL)
5	PW1600.05	SIDE HOOK	23	PW1600.23	MOTOR ASS'Y	40	PW1600.40	WATER INLET SEAL PAD
6	PW1600.06	FRONT LABEL	24	PW1600.24	HEX SCREW	41	PW1600.41	WATER INLET NUT
7	PW1600.07	FRONT COVER SIDE	25	PW1600.25	WASHER	42	PW1600.42	O-RING
8	PW1600.08	FRONT COVER	26	PW1600.26	SWITCH COVER	43	PW1600.43	BACK COVER
9	PW1600.09	LEFT GUIDE PLATE	27	PW1600.27	SEALING RING	44	PW1600.44	SELF TAPPING SCREW
10	PW1600.10	RIGHT GUIDE PLATE	28	PW1600.28	WATER OUTLET COVER	45	PW1600.45	SUPPORT FRAME (RIGHT)
11	PW1600.11	MAIN SWITCH	29	PW1600.29	PUMP ASS'Y	46	PW1600.46	SUPPORT FRAME (LEFT)
12	PW1600.12	CONNECTION BOX COVER	30	PW1600.30	BRACKET FOR GUN (UPPER)	47	PW1600.47	SELF-TAPPING SCREW
13	PW1600.13	SEALING RING	31	PW1600.31	BRACKET FOR GUN (LOWER)	48	PW1600.48	NEEDLE PROBE
14	PW1600.14	CAPACITOR	32	PW1600.32	MICROSWITCH SEALING RING	49	PW1600.49	DETERGENT BOTTLE
15	PW1600.15	CONNECTION BOX SEAL (A)	33	PW1600.33	DEFLECTOR PLATE (UPPER)	50	PW1600.50	WATER INLET HOSE
16	PW1600.16	CONNECTION BOX SEAL (B)	34	PW1600.34	DEFLECTOR PLATE (LOWER)	51	PW1600.51	QUICK CONNECTOR
17	PW1600.17	CONNECTION BOX SEAL (C)	35	PW1600.35	SELF-TAPPING SCREW	52	PW1600.52	QUICK CONNECTOR
18	PW1600.18	CONNECTION BOX, BOTTOM	36	PW1600.36	POWER CORD			
19	PW1600.19	SELF TAPPING SCREW	37	PW1600.37	POWER CORD GRIP			

NOTE: It is our policy to continually improve products and as such we reserve the right to alter data, specifications and component parts without prior notice.

IMPORTANT: No liability is accepted for incorrect use of product.

WARRANTY: Guarantee is 12 months from purchase date, proof of which will be required for any claim.

INFORMATION: For a copy of our latest catalogue and promotions call us on 01284 757525 and leave your full name and address, including postcode.



Issue: 1
 Issue Date: 070313

ITEM	PART NO	DESCRIPTION	ITEM	PART NO	DESCRIPTION
1	PW1600.P01	PUMP COVER	21	PW1600.P21	BASE, PUMP BODY
2	PW1600.P02	CONNECTION HEAD SEAL	22	PW1600.P22	SPRING, PLUNGER
3	PW1600.P03	PLUG, ONE-WAY VALVE	23	PW1600.P23	PLUNGER
4	PW1600.P04	SEAL	24	PW1600.P24	SPRING BASE, PLUNGER
5	PW1600.P05	SPRING BASE, ONE-WAY VALVE	25	PW1600.P25	BEARING (51205A)
6	PW1600.P06	SPRING, ONE-WAY VALVE	26	PW1600.P26	WOBBLE PLATE
7	PW1600.P07	PIN, ONE-WAY VALVE	27	PW1600.P27	BEARING (6303)
8	PW1600.P08	O-RING (3.15x2.05)	28	PW1600.P28	O-RING (61x2.3)
9	PW1600.P09	O-RING (11.5x1.8)	29	PW1600.P29	OIL BLOCK, SHAFT
10	PW1600.P10	BASE, ONE-WAY VALVE	30	PW1600.P30	CRANKCASE
11	PW1600.P11	O-RING (15x1.8)	31	PW1600.P31	GEAR SHAFT
12	PW1600.P12	BASE, ONE-WAY VALVE	32	PW1600.P32	GEAR (50T)
13	PW1600.P13	O-RING (8x1)	33	PW1600.P33	BEARING (629ZZ)
14	PW1600.P14	PIN, ONE-WAY VALVE	34	PW1600.P34	TSS ASS'Y
15	PW1600.P15	SPRING, ONE-WAY VALVE	35	PW1600.P35	WASHER
16	PW1600.P16	FRAME, ONE-WAY VALVE	36	PW1600.P36	SPRING WASHER
17	PW1600.P17	PUMP BODY	37	PW1600.P37	HEX BOLT (M6x65)
18	PW1600.P18	WATER SEAL	38	PW1600.P38	HEX BOLT (M6x35)
19	PW1600.P19	SUPPORT, PLUNGER	39	PW1600.P39	O-RING (19.3x1.5)
20	PW1600.P20	OIL BLOCK, PLUNGER			

NOTE: It is our policy to continually improve products and as such we reserve the right to alter data, specifications and component parts without prior notice.

IMPORTANT: No liability is accepted for incorrect use of product.

WARRANTY: Guarantee is 12 months from purchase date, proof of which will be required for any claim.

INFORMATION: For a copy of our latest catalogue and promotions call us on 01284 757525 and leave your full name and address, including postcode.